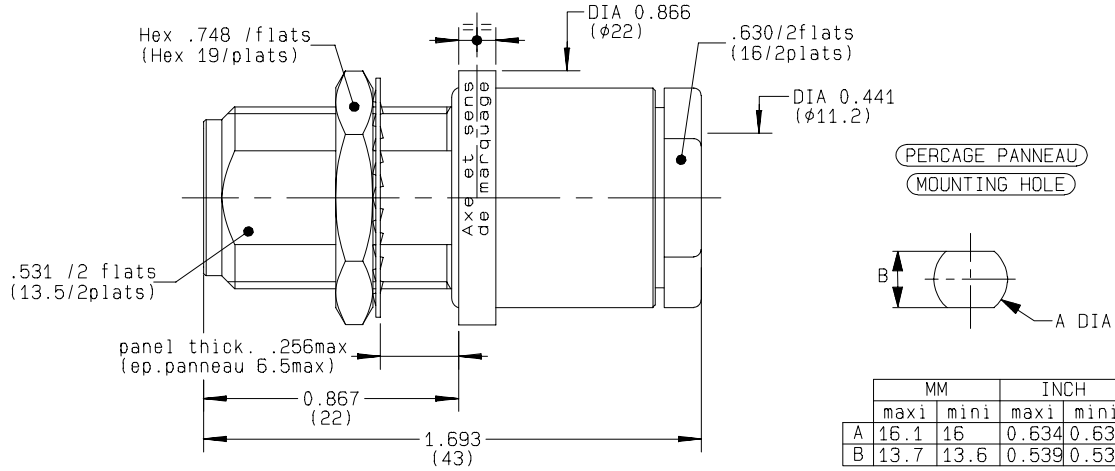


STRAIGHT BULKHEAD JACK CLAMP TYPE

PANEL SEAL CABLE 10+11/50+75 S+D

R161.332.020

Series : N



All dimensions are in mm.



COMPONENTS	MATERIALS	PLATINGS (µm)
BODY	BRASS	BBR 2
CENTER CONTACT	BERYLLIUM COPPER	GOLD 0.5 OVER NICKEL 2
OUTER CONTACT	BRASS	BBR 2
INSULATOR	PTFE	
GASKET	SILICONE RUBBER	
OTHERS PARTS	BRASS	BBR 2
-	-	-
-	-	-

Issue : 0327 A

In the effort to improve our products, we reserve the right to make changes judged to be necessary.



STRAIGHT BULKHEAD JACK CLAMP TYPE

R161.332.020

PANEL SEAL CABLE 10+11/50+75 S+D

Series : N

PACKAGING

Standard	Unit	Other
50	'W' option	Contact us

SPECIFICATION

ELECTRICAL CHARACTERISTICS

Impedance		50	Ω
Frequency		0-11	GHz
VSWR	1.3 +	0.000	x F(GHz) Maxi
Insertion loss		0.048	\sqrt{F} (GHz) dB Maxi
RF leakage	- (NA	- F(GHz)) dB Maxi
Voltage rating		1400	Veff Maxi
Dielectric withstanding voltage		2500	Veff mini
Insulation resistance		5000	M Ω mini

CABLE ASSEMBLY

Stripping	a	b	c	d	e	f
mm	5.00	8.50	0.00	0.00	1.50	0.00

Assembly instruction :

Recommended cable(s)

KX 8
RG 11
RG 144
RG 225
KX 13
RG 165
RG 216
KX 4
RG 213
RG 214

Characteristics indicated on this data sheet are those that can be achieved with the highest performance cable. Intrinsic limitations of the cable may diminish the performance of the assembly

Cable retention

- pull off **300** N mini
- torque **NA** N.cm

MECHANICAL CHARACTERISTICS

Center contact retention			
Axial force – Mating end		NA	N mini
Axial force – Opposite end		NA	N mini
Torque		NA	N.cm mini

Recommended torque			
Mating		NA	N.cm
Panel nut		500	N.cm
Clamp nut		800	N.cm
A/F clamp nut		0.000	mm

Mating life		500	Cycles mini
Weight		55.000	g

TOOLING

Part Number	Description	Hexagon
.	.	.

ENVIRONMENTAL

Operating temperature		-55/+155	$^{\circ}$ C
Hermetic seal		NA	Atm.cm3/s
Panel leakage		IP67	

OTHERS CHARACTERISTICS

Issue : 0327 A

In the effort to improve our products, we reserve the right to make changes judged to be necessary.

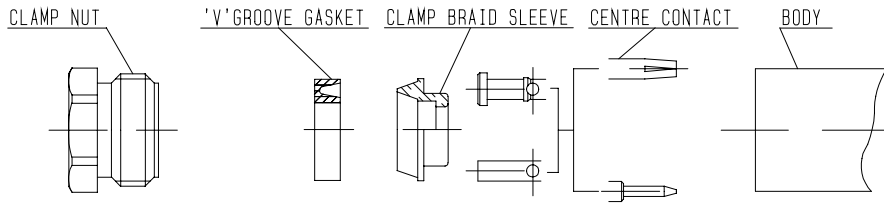


STRAIGHT BULKHEAD JACK CLAMP TYPE

R161.332.020

PANEL SEAL CABLE 10+11/50+75 S+D

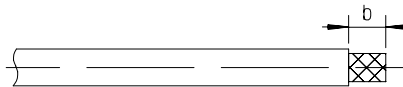
Series : N



①

Strip the cable .

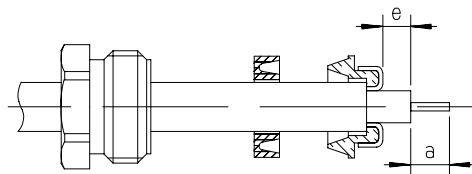
-
-
-



②

Slide the clamp nut and the 'V' groove gasket onto the cable .
Slide clamp braid sleeve over braid .
Fold back braid and trim off surplus braid .
Trim back dielectric as shown .

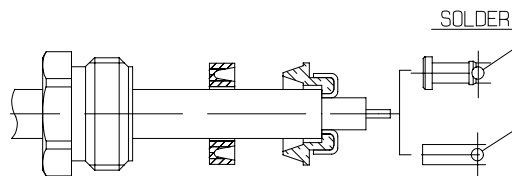
-



③

Solder the cable inner conductor into centre contact .

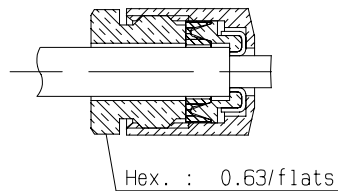
-
-
-



④

Screw sub-assembly into the connector body .
(recommended coupling torque 70.8 in.lb)

-
-



Issue : 0327 A

In the effort to improve our products, we reserve the right to make changes judged to be necessary.

